

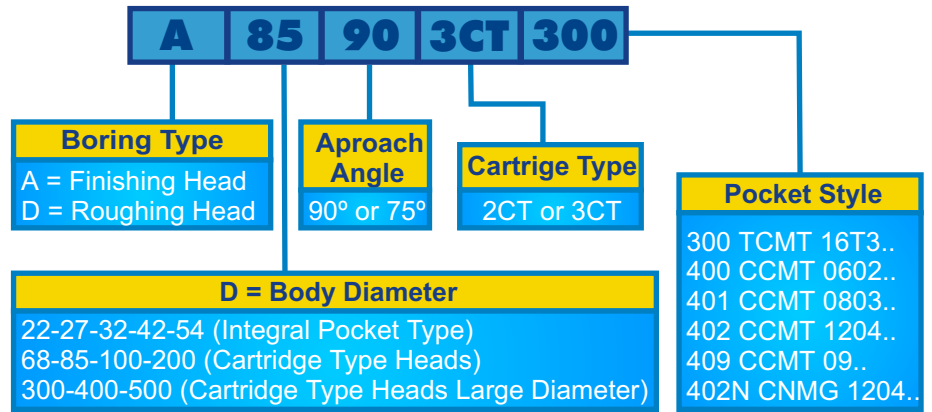
Index

- **Rough heads**
- **Finish heads**
- **Micro boring heads & boring bars**
- **A42016 micro heads & 16mmØ shank boring bars**
- **Key to select arbors**
- **Arbors programme**
- **Extensions & reducers**
- **Large diameter boring heads**
- **Modular system for: milling, drilling, etc.**
- **Cartridges programme**
- **Back cover**

PINZBOHR BORING SYSTEM



PRODUCT NUMBER BREAKDOWN



Boring Range Ø 24-500 mm. **ROUGHING** Speed - Set
Safety - Set

INTEGRAL POCKET TYPE

Bore Range Ø mm		D	d	X ₁	75° Approach Product Nr.	90° Approach Product Nr.
MIN	MAX					
24	30	22	12	34	D 2275 400	D 2290 400
29	40	27	15	42	D 2775 401	D 2790 401
29	40	27	15	42	D 2775 409	D 2790 409
39	50	32	20	45	D 3275 401	D 3290 401
39	50	32	20	45	D 3275 409	D 3290 409
49	65	42	24	56	D 4275 300	D 4290 300
49	65	42	24	56	D 4275 402	D 4290 402
53	65	42	24	56	D 4275 402N	D 4290 402N
63	82	54	28	66	D 5475 300	D 5490 300
63	82	54	28	66	D 5475 402	D 5490 402
63	82	54	28	66	D 5475 402N	D 5490 402N

CARTRIDGE TYPE HEADS

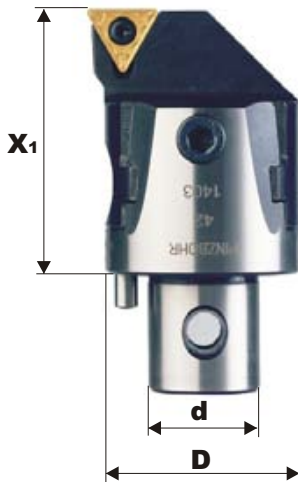
80	102	68	36	86	D 68752CT 300	D 68902CT 300
80	102	68	36	86	D 68752CT 402	D 68902CT 402
80	102	68	36	86	D 68752CT 402N	D 68902CT 402N
100	125	85	50	100	D 85753CT 300	D 85903CT 300
100	125	85	50	100	D 85753CT 402	D 85903CT 402
100	125	85	50	100	D 85753CT 402N	D 85903CT 402N
125	160	110	60	100	D 100753CT 300	D 100903CT 300
125	160	110	60	100	D 100753CT 402	D 100903CT 402
125	160	110	60	100	D 100753CT 402N	D 100903CT 402N
160	220	145	60	100	D 200753CT 300	D 200903CT 300
160	220	145	60	100	D 200753CT 402	D 200903CT 402
160	220	145	60	100	D 200753CT 402N	D 200903CT 402N

CARTRIDGE TYPE HEADS LARGE DIAMETER

220	320	-	-	90	D 300753CT 300	D 300903CT 300	*
290	400	-	-	90	D 400753CT 300	D 400903CT 300	*
370	500	-	-	90	D 500753CT 300	D 500903CT 300	*

* ALSO AVAILABLE IN GEOMETRIES 402 & 402 N

PINZBOHR BORING SYSTEM



PRODUCT NUMBER BREAKDOWN

A 85 90 3CT 300

Boring Type
A = Finishing Head
D = Roughing Head

Approach Angle
90° or 75°

Cartridge Type
2CT or 3CT

Pocket Style
300 TCMT 16T3..
400 CCMT 0602..
401 CCMT 0803..
402 CCMT 1204..
409 CCMT 09..
402N CNMG 1204..

D = Body Diameter
22-27-32-42-54 (Integral Pocket Type)
68-85-100-200 (Cartridge Type Heads)
300-400-500 (Cartridge Type Heads Large Diameter)

Boring Range \varnothing 24-500 mm. **FINISHING** Adjusting Accuracy 0.002 mm \varnothing

INTEGRAL POCKET TYPE

Bore Range \varnothing mm		D	d	X ₁	75° Approach Product Nr.	90° Approach Product Nr.
MIN	MAX					
24	30	22	12	34	A 2275 400	A 2290 400
29	40	27	15	42	A 2775 401	A 2790 401
29	40	27	15	42	A 2775 409	A 2790 409
39	50	32	20	45	-	A 3290 300
39	50	32	20	45	A 3275 401	A 3290 401
39	50	32	20	45	A 3275 409	A 3290 409
49	65	42	24	56	A 4275 300	A 4290 300
49	65	42	24	56	-	A 4290 402
53	65	42	24	56	-	A 4290 402N
63	82	54	28	66	A 5475 300	A 5490 300
63	82	54	28	66	-	A 5490 402
63	82	54	28	66	-	A 5490 402N

CARTRIDGE TYPE HEADS

80	102	68	36	86	A 68752CT 300	A 68902CT 300
80	102	68	36	86	A 68752CT 402	A 68902CT 402
80	102	68	36	86	A 68752CT 402N	A 68902CT 402N
100	125	85	50	100	A 85753CT 300	A 85903CT 300
100	125	85	50	100	A 85753CT 402	A 85903CT 402
100	125	85	50	100	A 85753CT 402N	A 85903CT 402N
125	160	110	60	100	A 100753CT 300	A 100903CT 300
125	160	110	60	100	A 100753CT 402	A 100903CT 402
125	160	110	60	100	A 100753CT 402N	A 100903CT 402N
160	220	145	60	100	A 200753CT 300	A 200903CT 300
160	220	145	60	100	A 200753CT 402	A 200903CT 402
160	220	145	60	100	A 200753CT 402N	A 200903CT 402N

CARTRIDGE TYPE HEADS LARGE DIAMETER

220	320	-	-	90	A 300753CT 300	A 300903CT 300	*
290	400	-	-	90	A 400753CT 300	A 400903CT 300	*
370	500	-	-	90	A 500753CT 300	A 500903CT 300	*

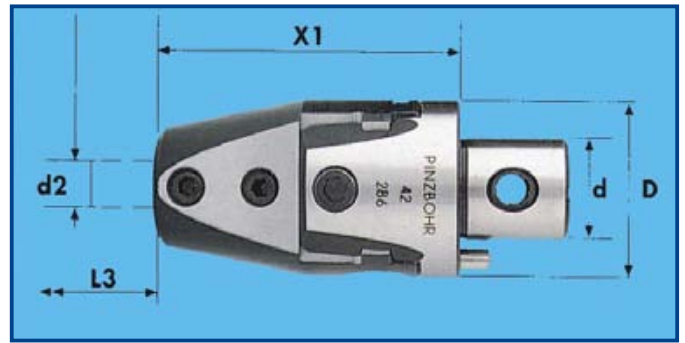
* ALSO AVAILABLE IN GEOMETRIES 402 & 402 N

PINZBOHR BORING SYSTEM

MICRO BORING HEADS FOR SMALL DIAMETERS

Pinzbohr MICRO heads are used in combination with indexable ISO boring bars, these units can produce bores down to 8 mm. diameter and up to 38 mm. Diameter. These MICRO Heads fit the standard Pinzbohr Arbors (extra short execution) with connection diameters "D" of 27, 32 and 42

Graduated dial read out precision 0,002 mm Ø

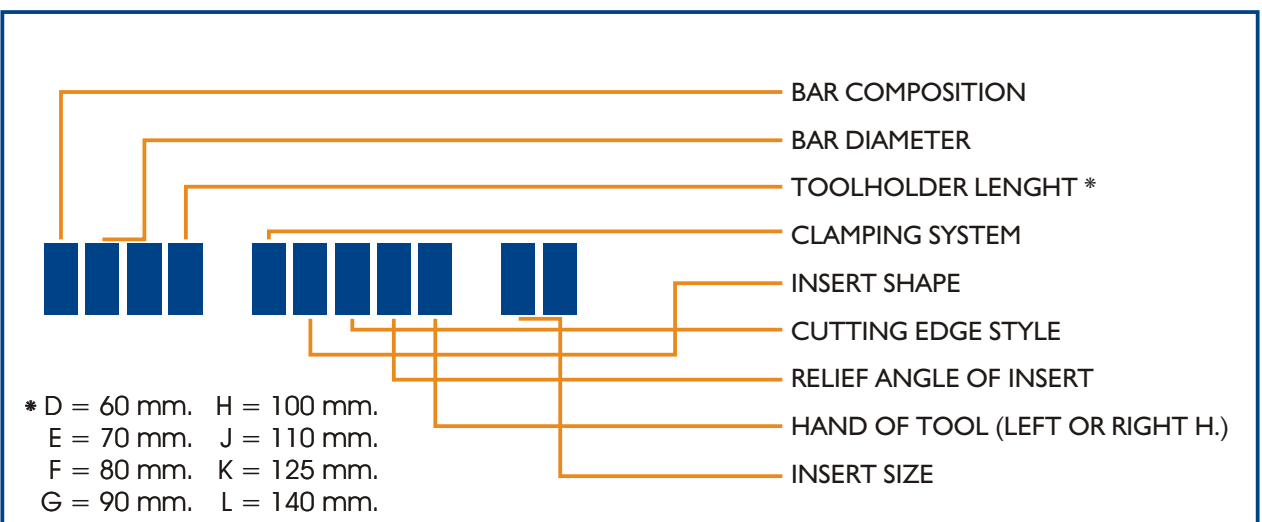


Product Number	Bore Range		"D" Connect Diameter	d	X1	L3	d2	Kg	ISO boring bar	Overall length	Insert	Torx Screw	Torx Key
	Min.	Max.											
A 27 006	8	20	27 mm.	15	50	36	6	0.180	S06E SEXPR 04	70	EPGT 0401..L	M2X4	6
									S06D SELPR 05	60	EPMT 0502..	M2.2X5.6	7
A 27 008	10	21	27 mm.	15	50	46	8	0.180	S08F SCLCR 06	80	CCMT 0602..	M2.5X5.8	7
A 32 008	10	21	32 mm.	20	58	46	8	0.370	S08F SCLCR 06	80	CCMT 0602..	M2.5X5.8	7
A 32 010	13	25	32 mm.	20	58	51	10	0.370	S10G SCLCR 06	90	CCMT 0602..	M2.5X5.8	7
A 42 010	13	29	42 mm.	24	70	51	10	0.690	S10G SCLCR 06	90	CCMT 0602..	M2.5X5.8	7
A 42 012	16	34	42 mm.	24	70	63	12	0.690	S12H SCLCR 06	100	CCMT 0602..	M2.5X5.8	7
A 42 016	20	38	42 mm.	24	70	73	16	0.690	S16J SCLCR 09	110	CCMT 09T3..	M4X8.5	15



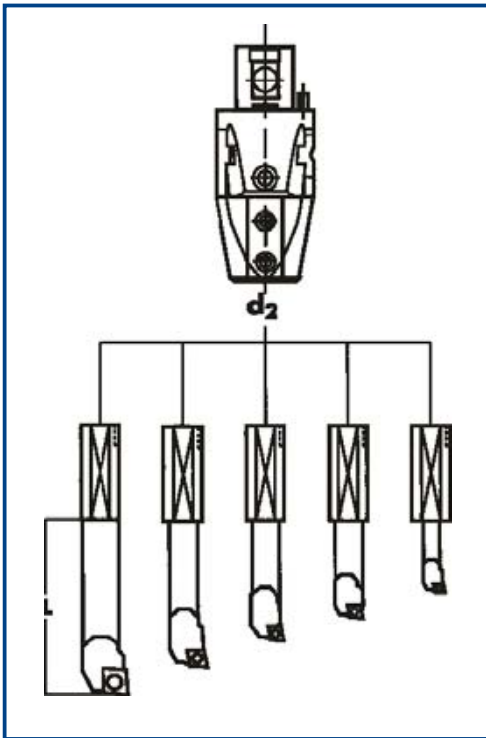
Product Number	Insert	Torx Screw	Torx Key
C06F SEXPR 04	EPGT 0401..L	M2X4	6
C08G SCLCR 06	CCMT 0602..	M2.5X5.8	7
C10J SCLCR 06	CCMT 0602..	M2.5X5.8	7
C12K SCLCR 06	CCMT 0602..	M2.5X5.8	7
C16L SCLCR 09	CCMT 09T3..	M4X8.5	15

NOMENCLATURE FOR BORING TOOLHOLDERS



PINZBOHR BORING SYSTEM

INDEXABLE BORING BARS 16 mm. Ø SHANK (FOR A 42 016 MICRO HEAD)



A set of 5 BORING BARS 6, 8, 10, 12 & 16 mm. Ø can be used on micro head model A 42 016 since each bar has a 16 mm. shank fitting in A 42 016 socket (d2)

RHOMBIC INSERT

Product Number	Insert	Bore Range		L	Torx Screw	Torx Key
		Min	Max			
S06/16 SEXPR 04	EPGT 0401..L	8	26	25	M2X4	T 6
S06/16 SEXPR 05	EPMT 0502..	8	26	25	M2.2X5.6	T 7
S08/16 SCLCR 06	CCMT 0602..	10	28	35	M2.5X5.8	T 7
S10/16 SCLCR 06	CCMT 0602..	13	31	45	M2.5X5.8	T 7
S12/16 SCLCR 06	CCMT 0602..	16	34	57	M2.5X5.8	T 7
S16/16 SCLCR 09	CCMT 09T3..	20	38	73	M4X8.5	T 15

TRIANGULAR INSERT

Product Number	Insert	Bore Range		L	Torx Screw	Torx Key
		Min	Max			
S06/16 STFCR 06	TCMT 06T1..	8	26	25	M2X4.9	T 6
S08/16 STFCR 06	TCMT 06T1..	10	28	35	M2X4.9	T 6
S10/16 STFCR 09	TCMT 0902..	13	31	45	M2.2X6.4	T 7
S12/16 STFCR 09	TCMT 0902..	16	34	57	M2.2X6.4	T 7
S16/16 STFCR 09	TCMT 0902..	20	38	73	M2.2X6.4	T 7
S16/16 STFCR 16	TCMT 16T3..	20	38	73	M4X8.5	T 15

PINZBOHR BORING SYSTEM

PRODUCT NUMBER BREAKDOWN

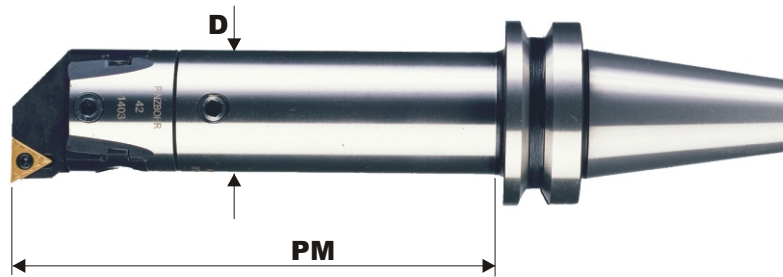
AS 340 42 160

Type of Shank
BT = MAS BT403
AS = DIN 69871
OTT = DIN 2080
HSK = DIN 69893
CAT = CATERPILLAR

Size of Taper
302 = MORSE 2
303 = MORSE 3
304 = MORSE 4
305 = MORSE 5
330 = ISO 30
340 = ISO 40
345 = ISO 45
350 = ISO 50
550 = ISO 50 L.D.
50 = HSK 50
63 = HSK 63
100 = HSK 100

D = Body Diameter
22-27-32-42-54 (Integral Pocket Type)
68-85-100-200 (Cartridge Type Heads)
300-400-500 (Cartridge Type Heads Large Diameter)

PM = Maximum Boring Depth
50 - 55 - 60 - 65 - 75 - 80 - 90 - 100 - 110 - 130 - 145 - 160 - 165 - 170 - 185 - 190 - 200 - 260 - 320



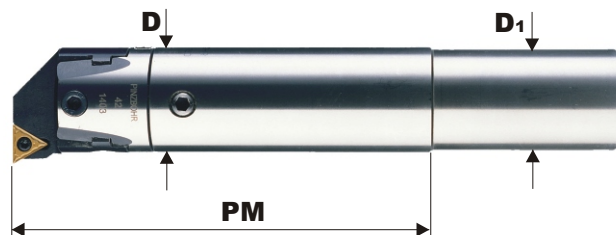
B 25 27 100

Weldon Shank
B = DIN 1835

D ₁ = Shank Diameter
20 - 25 - 32 - 40

D = Body Diameter
22 - 27 - 32 - 42

PM = Maximum Boring Depth
50-55-60-90-100-160



* THE PICTURES SHOW ARBOR TOGETHER WITH BORING HEAD

BACK TO INDEX

PINZBOHR BORING SYSTEM



HSK DIN 69893			
PRODUCT NR.	SHANK	D	PM
HSK 50A	22	55	
HSK 50A	27	65	
HSK 50A	32	75	
HSK 50A	42	90	
HSK 63A	22	55	
HSK 63A	27	65	
HSK 63A	32	75	
HSK 63A	42	90	
HSK 63A	54	110	
HSK 63A	68	145	
HSK 100A	22	55	
HSK 100A	27	65	
HSK 100A	32	75	
HSK 100A	42	90	
HSK 100A	54	110	
HSK 100A	68	145	
HSK 100A	85	165	
HSK 100A	100	185	

ISO DIN 2080			
PRODUCT NR.	SHANK	D	PM
OTT 340	22	80	
OTT 340	22	100	
OTT 340	27	55	
OTT 340	27	100	
OTT 340	27	130	
OTT 340	32	60	
OTT 340	32	100	
OTT 340	32	130	
OTT 340	42	75	
OTT 340	42	160	
OTT 340	42	200	
OTT 340	54	90	
OTT 340	54	160	
OTT 340	54	200	
OTT 340	68	160	
OTT 340	68	200	
OTT 350	22	80	
OTT 350	22	100	
OTT 350	27	55	
OTT 350	27	100	
OTT 350	27	130	
OTT 350	32	60	
OTT 350	32	100	
OTT 350	32	130	
OTT 350	42	75	
OTT 350	42	160	
OTT 350	42	200	
OTT 350	54	90	
OTT 350	54	160	
OTT 350	54	200	
OTT 350	68	115	
OTT 350	68	200	
OTT 350	68	260	
OTT 350	85	200	
OTT 350	85	260	
OTT 350	85	320	
OTT 350	100	170	
OTT 350	100	260	
OTT 350	100	320	
OTT 550		160	

MAS BT 403			
PRODUCT NR.	SHANK	D	PM
BT 340	22	50	
BT 340	22	80	
BT 340	22	100	
BT 340	27	55	
BT 340	27	100	
BT 340	27	130	
BT 340	32	60	
BT 340	32	100	
BT 340	32	150	
BT 340	42	75	
BT 340	42	160	
BT 340	42	200	
BT 340	54	90	
BT 340	54	160	
BT 340	54	200	
BT 340	68	160	
BT 340	68	200	
BT 340	85	200	
BT 340	100	200	
BT 350	22	80	
BT 350	22	100	
BT 350	27	55	
BT 350	27	100	
BT 350	27	130	
BT 350	32	60	
BT 350	32	100	
BT 350	32	130	
BT 350	42	160	
BT 350	42	200	
BT 350	54	90	
BT 350	54	160	
BT 350	54	200	
BT 350	68	115	
BT 350	68	200	
BT 350	68	260	
BT 350	85	200	
BT 350	85	260	
BT 350	85	320	
BT 350	100	190	
BT 350	100	260	
BT 350	100	320	
BT 550		160	

DIN 69871			
PRODUCT NR.	SHANK	D	PM
AS 340	22	80	
AS 340	22	100	
AS 340	27	55	
AS 340	27	100	
AS 340	27	130	
AS 340	32	60	
AS 340	32	100	
AS 340	32	130	
AS 340	42	75	
AS 340	42	160	
AS 340	42	200	
AS 340	54	160	
AS 340	54	200	
AS 340	68	160	
AS 340	68	200	
AS 350	22	80	
AS 350	22	100	
AS 350	27	55	
AS 350	27	100	
AS 350	27	130	
AS 350	32	60	
AS 350	32	100	
AS 350	32	130	
AS 350	42	75	
AS 350	42	160	
AS 350	42	200	
AS 350	54	90	
AS 350	54	160	
AS 350	54	200	
AS 350	68	115	
AS 350	68	200	
AS 350	68	260	
AS 350	85	200	
AS 350	85	260	
AS 350	85	320	
AS 350	100	190	
AS 350	100	260	
AS 350	100	320	
AS 550		160	

WELDON			
PRODUCT NR.	SHANK	D	PM
B 20	22	50	
B 20	22	100	
B 25	27	55	
B 25	27	100	
B 32	32	60	
B 32	32	100	
B 32	32	160	
B 32	42	90	
B 40	42	90	
B 40	42	160	

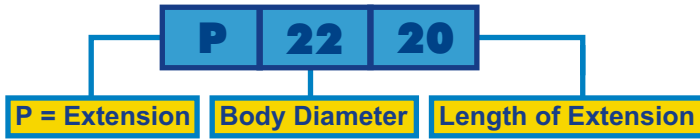
* ISO 45 ARBORS UPON REQUEST

* ALSO AVAILABLE MORSE ARBORS 2, 3, 4 & 5

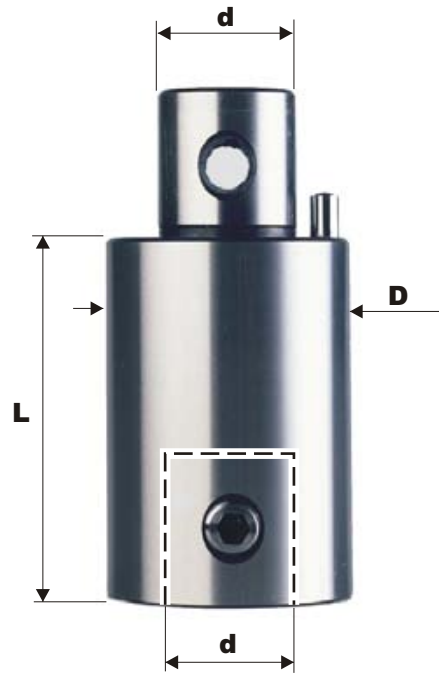
* THE ABOVE PICTURES SHOW ARBOR TOGETHER WITH BORING HEAD

PINZBOHR BORING SYSTEM

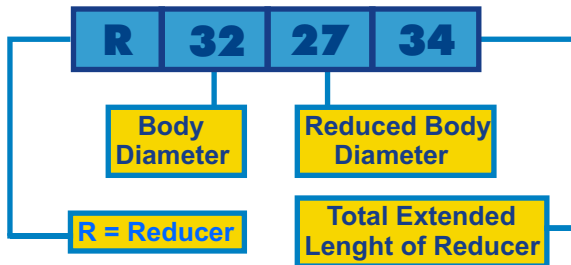
EXTENSION PIECES



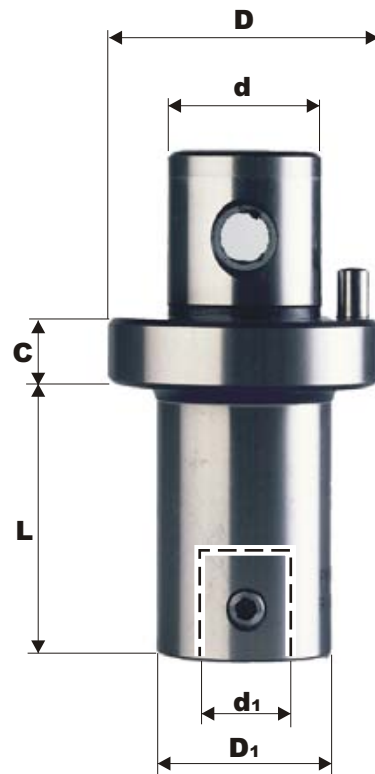
EXTENSIONS				
D	L	d	Prod. Nr.	
22	20	12	P22	20
22	30	12	P22	30
27	30	15	P27	30
27	45	15	P27	45
32	35	20	P32	35
32	52	20	P32	52
42	40	24	P42	40
42	60	24	P42	60
54	50	28	P54	50
54	75	28	P54	75
68	60	36	P68	60
68	90	36	P68	90
85	70	50	P85	70
85	105	50	P85	105
100	80	60	P100	80
100	120	60	P100	120



REDUCERS PIECES



REDUCERS							
D	D ₁	d	d ₁	L	c	Product Nr.	
27	22	15	12	26	10	R27	22 36
32	22	20	12	30	10	R32	22 40
42	22	24	12	48	10	R42	22 58
54	22	28	12	76	10	R54	22 86
68	22	36	12	90	12	R68	22 102
32	27	20	15	24	10	R32	27 34
42	27	24	15	40	10	R42	27 50
54	27	28	15	70	10	R54	27 80
68	27	36	15	83	12	R68	27 95
42	32	24	20	36	10	R42	32 46
54	32	28	20	66	10	R54	32 76
68	32	36	20	78	12	R68	32 90
54	42	28	24	60	10	R54	42 70
68	42	36	24	70	12	R68	42 82
85	42	50	24	83	12	R85	42 95
68	54	36	28	60	12	R68	54 72
85	54	50	28	78	12	R85	54 90
85	68	50	36	88	12	R85	68 100
100	85	60	50	88	12	R100	85 100



PINZBOHR BORING SYSTEM

LARGE BORING HEADS

BORING RANGE Ø 220 - 500 mm



ROUGHING

Bore Range Ø mm		D	d	X ₁	75° Approach Product Nr.	90° Approach Product Nr.	*
MIN	MAX						
220	320	-	-	90	D 300753CT 300	D 300903CT 300	*
290	400	-	-	90	D 400753CT 300	D 400903CT 300	*
370	500	-	-	90	D 500753CT 300	D 500903CT 300	*

* ALSO AVAILABLE IN GEOMETRIES 402 & 402 N

BORING RANGE Ø 220 - 500 mm

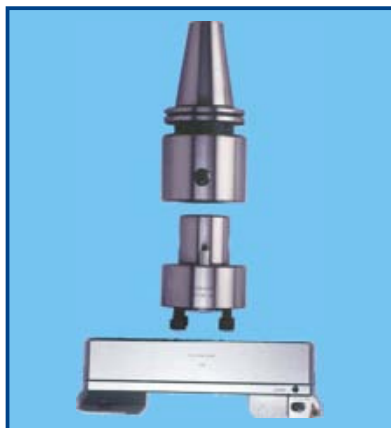


FINISHING

Bore Range Ø mm		D	d	X ₁	75° Approach Product Nr.	90° Approach Product Nr.	*
MIN	MAX						
220	320	-	-	90	A 300753CT 300	A 300903CT 300	*
290	400	-	-	90	A 400753CT 300	A 400903CT 300	*
370	500	-	-	90	A 500753CT 300	A 500903CT 300	*

* ALSO AVAILABLE IN GEOMETRIES 402 & 402 N

ADAPTER MOUNT

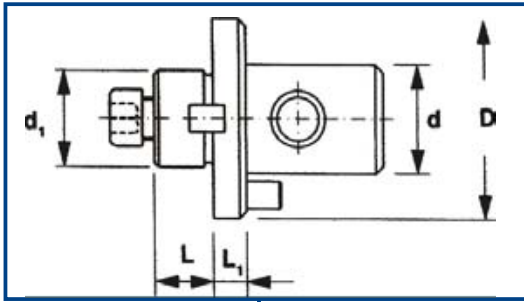


DIRECT MOUNT



PINZBOHR BORING SYSTEM

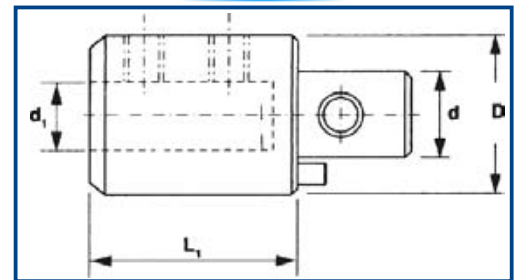
MILLING CUTTER HOLDER



Product Number	Dimensions					Kg
	D	d	d ₁	L	L ₁	
ADM 42-16	42	24	16	17	14	0.220
ADM 42-22	42	24	22	19	12	0.250
ADM 54-16	54	28	16	17	30	0.600
ADM 54-22	54	28	22	19	28	0.650
ADM 54-27	54	28	27	21	18	0.650
ADM 68-16	68	36	16	17	25	0.700
ADM 68-22	68	36	22	19	23	0.750
ADM 68-27	68	36	27	21	21	0.770
ADM 68-32	68	36	32	24	26	0.900
ADM 85-32	85	50	32	24	25	1.600
ADM 85-40	85	50	40	27	30	1.900

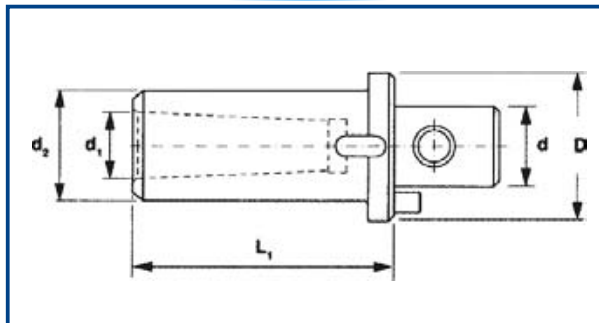


WELDON



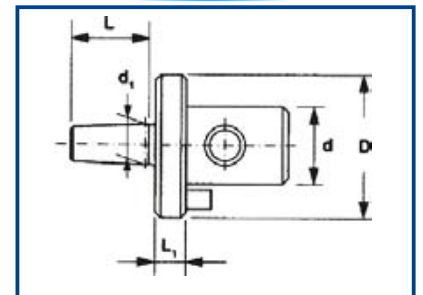
Product Number	Dimensions				Kg
	D	d	d ₁	L ₁	
ADM 42 W6	42	24	6	35	0.500
ADM 42 W8	42	24	8	35	0.500
ADM 42 W10	42	24	10	38	0.550
ADM 42 W12	42	24	12	55	0.640
ADM 42 W16	42	24	16	60	0.640
ADM 42 W20	42	24	20	65	0.640
ADM 54 W16	54	28	16	60	1.150
ADM 54 W20	54	28	20	65	1.200
ADM 54 W25	54	28	25	70	1.250

MORSE



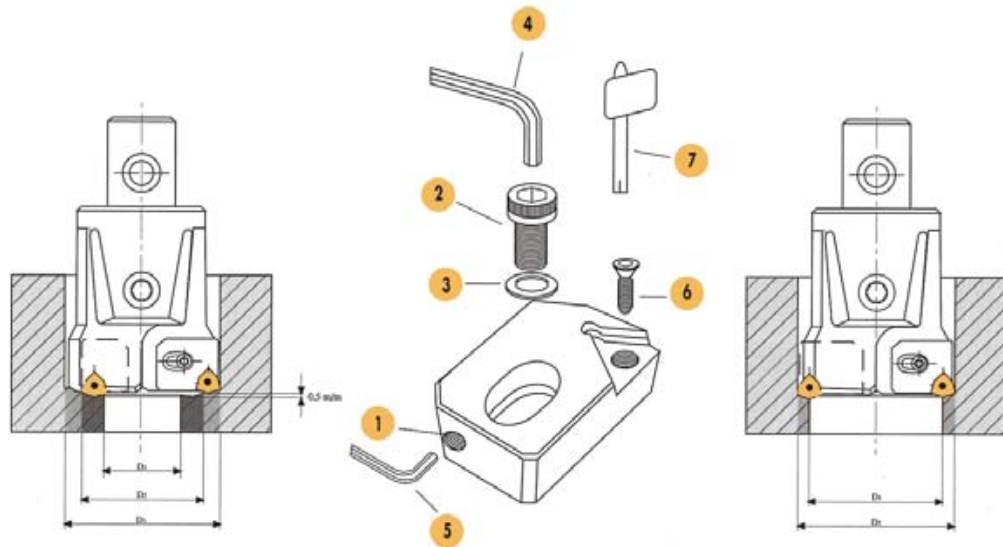
Product Number	Dimensions					Kg
	D	d	d ₁	d ₂	L	
ADM 42 CM2	42	24	17.780	30	90	0.500
ADM 42 CM3	42	24	23.825	36	110	0.520
ADM 54 CM2	54	28	17.780	30	90	0.830
ADM 54 CM3	54	28	23.825	36	110	0.780

DIN 238



Product Number	Dimensions					Kg
	D	d	d ₁	L	L ₁	
ADM 42 B12	42	24	12.065	22	8	0.280
ADM 54 B12	54	28	12.065	22	10	0.330
ADM 54 B16	54	28	15.733	29	10	0.400
ADM 68 B16	68	36	15.733	29	12	0.650

PINZBOHR BORING SYSTEM



IN STAGGERED BORING
2 CARTRIDGES

{ 3 CT
3 CTS OR { 2 CT
2 CTS

IN SYMETRICAL BORING
2 CARTRIDGES

3 CT OR 2 CT

PINZBOHR PROGRAMME FOR INDEXABLE CARTRIDGES

Product Number	Cartridge Height	Cartridge Weight Gr.	Carbide Insert	1	2	3	4	5	6	7
2CT 75 300	22.5	50	TC.. 16T3..	D 68 29	D 68 27	D 68 28	5	2	TT28106	T15
2CT 75 402	22.5	50	CC.. 1204..	D 68 29	D 68 27	D 68 28	5	2	TT28349	T20
2CT 75 402 N	22.5	50	CN.. 1204.. R	D 68 29	D 68 27	D 68 28	5	2	MPL44	2.5
2CT 90 300	22.5	50	TC.. 16T3	D 68 29	D 68 27	D 68 28	5	2	TT28106	T15
2CT 90 300 S	23	50	TC.. 16T3	D 68 29	D 68 27	D 68 28	5	2	TT28106	T15
2CT 90 402	22.5	50	CC.. 1204..	D 68 29	D 68 27	D 68 28	5	2	TT28349	T20
2CT 90 402 S	23	50	CC.. 1204..	D 68 29	D 68 27	D 68 28	5	2	TT28349	T20
2CT 90 402 N	22.5	50	CN.. 1204.. L	D 68 29	D 68 27	D 68 28	5	2	MPL44	2.5
2CT 90 402 NS	23	50	CN.. 1204.. L	D 68 29	D 68 27	D 68 28	5	2	MPL44	2.5
2CT 90 W06	23.5	50	WC.. 06T3	D 68 29	D 68 27	D 68 28	5	2	M3.5X5	T9
2CT 90 W06 S	24	50	WC.. 06T3	D 68 29	D 68 27	D 68 28	5	2	M3.5X5	T9
3CT 75 300	28	100	TC.. 16T3..	D 85 29	D 68 27	D 85 28	5	3	TT28107	T15
3CT 75 402	28	100	CC.. 1204..	D 85 29	D 68 27	D 85 28	5	3	TT28349	T20
3CT 75 402 N	28	100	CN.. 1204.. R	D 85 29	D 68 27	D 85 28	5	3	MPL44	2.5
3CT 90 300	28	100	TC.. 16T3	D 85 29	D 68 27	D 85 28	5	3	TT28107	T15
3CT 90 300 S	28.5	100	TC.. 16T3	D 85 29	D 68 27	D 85 28	5	3	TT28107	T15
3CT 90 402	28	100	CC.. 1204..	D 85 29	D 68 27	D 85 28	5	3	TT28349	T20
3CT 90 402 S	28.5	100	CC.. 1204..	D 85 29	D 68 27	D 85 28	5	3	TT28349	T20
3CT 90 402 N	28	100	CN.. 1204.. L	D 85 29	D 68 27	D 85 28	5	3	MPL44	2.5
3CT 90 402 NS	28.5	100	CN.. 1204.. L	D 85 29	D 68 27	D 85 28	5	3	MPL44	2.5
3CT 90 W08	29	100	WC.. 0804..	D 85 29	D 68 27	D 85 28	5	3	M4X5.5	T15
3CT 90 W08 S	29.5	100	WC.. 0804..	D 85 29	D 68 27	D 85 28	5	3	M4X5.5	T15



FOR MORE INFORMATION SEE OUR GENERAL CATALOG

DISTRIBUTORS IN:

AUSTRALIA - AUSTRIA - BELGIUM - CHINA - DENMARK - FINLAND - FRANCE - GERMANY - HOLLAND - HONG KONG - INDIA - ISRAEL - ITALY - JAPAN - KOREA - NEW ZEALAND - NORWAY - PORTUGAL - SINGAPORE - SOUTH AFRICA - SPAIN - SWEDEN - SWITZERLAND - TURKEY - UNITED KINGDOM - USA